

This map is for assessment use only and does NOT represent a survey.
 No liability is assumed for the accuracy of the data delineated herein.
 Information on roads and other non-assessed parcels may be obtained from the Road Document Listing in the Assessor's Office.

This map is compiled from official records, including surveys and deeds, but only contains the information required for assessment. See the recorded documents for more detailed legal information.

USE THIS SCALE (FEET) WHEN MAP REDUCED FROM 11X17 ORIGINAL

0 100 200 400 600 800

ASSESSOR'S PARCELS - CLARK COUNTY, NV.
 Briana Johnson - Assessor

BOOK **T21S R59E**

136	137	138
165	164	163
174	175	176
194	193	192

Scale: 1" = 800'

SEC. **33**


6	5	4	3	2	1
7	8	9	10	11	12
18	17	16	15	14	13
19	20	21	22	23	24
30	29	28	27	26	25
31	32	33	34	35	36

Rev: 1/7/2019

MAP **ALL SEC**

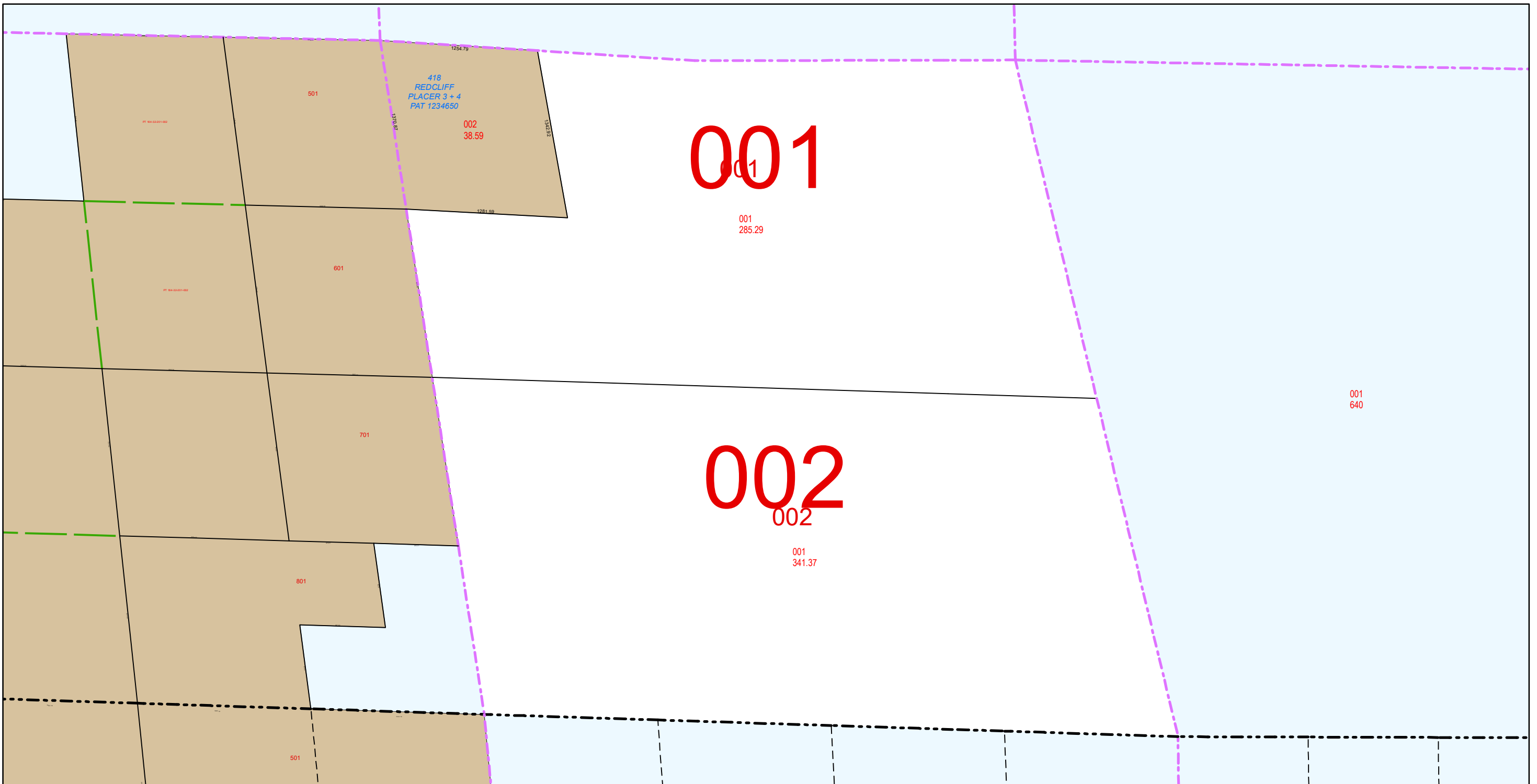
8	4	8	4
5	1	5	1
6	2	6	2
7	3	7	3
8	4	8	4
5	1	5	1

164-33-0



MAP LEGEND

- PARCEL BOUNDARY
- SUB BOUNDARY
- PM/LD BOUNDARY
- ROAD EASEMENT
- NON-PARCEL LOT LINE
- MATCH / LEADER LINE
- HISTORIC SUB BOUNDARY
- HISTORIC PM/LD BOUNDARY
- SECTION LINE
- CONDOMINIUM UNIT
- AIR SPACE PCL
- RIGHT OF WAY PCL
- SUB-SURFACE PCL
- ROAD ID NUMBER
- PARCEL NUMBER
- ACREAGE
- PARCEL SUB/SEQ NUMBER
- PLAT RECORDING NUMBER
- BLOCK NUMBER
- LOT NUMBER
- GOV. LOT NUMBER



SUB-SURFACE 164-32-389-001

TAX DIST 101