

This map is for assessment use only and does NOT represent a survey.
 No liability is assumed for the accuracy of the data delineated herein.
 Information on roads and other non-assessed parcels may be obtained from the Road Document Listing in the Assessor's Office.

This map is compiled from official records, including surveys and deeds, but only contains the information required for assessment. See the recorded documents for more detailed legal information.

USE THIS SCALE (FEET) WHEN MAP REDUCED FROM 11X17 ORIGINAL

ASSESSOR'S PARCELS - CLARK COUNTY, NV.
 Briana Johnson - Assessor

BOOK **T18S R63E** SEC. **5** MAP **ALL SEC** **103-05-0**

64 065 066 067
 86 085 084 083
 01 102 103 104
 24 123 122 121

6	5	4	3	2	1
7	8	9	10	11	12
18	17	16	15	14	13
19	20	21	22	23	24
30	29	28	27	26	25
31	32	33	34	35	36

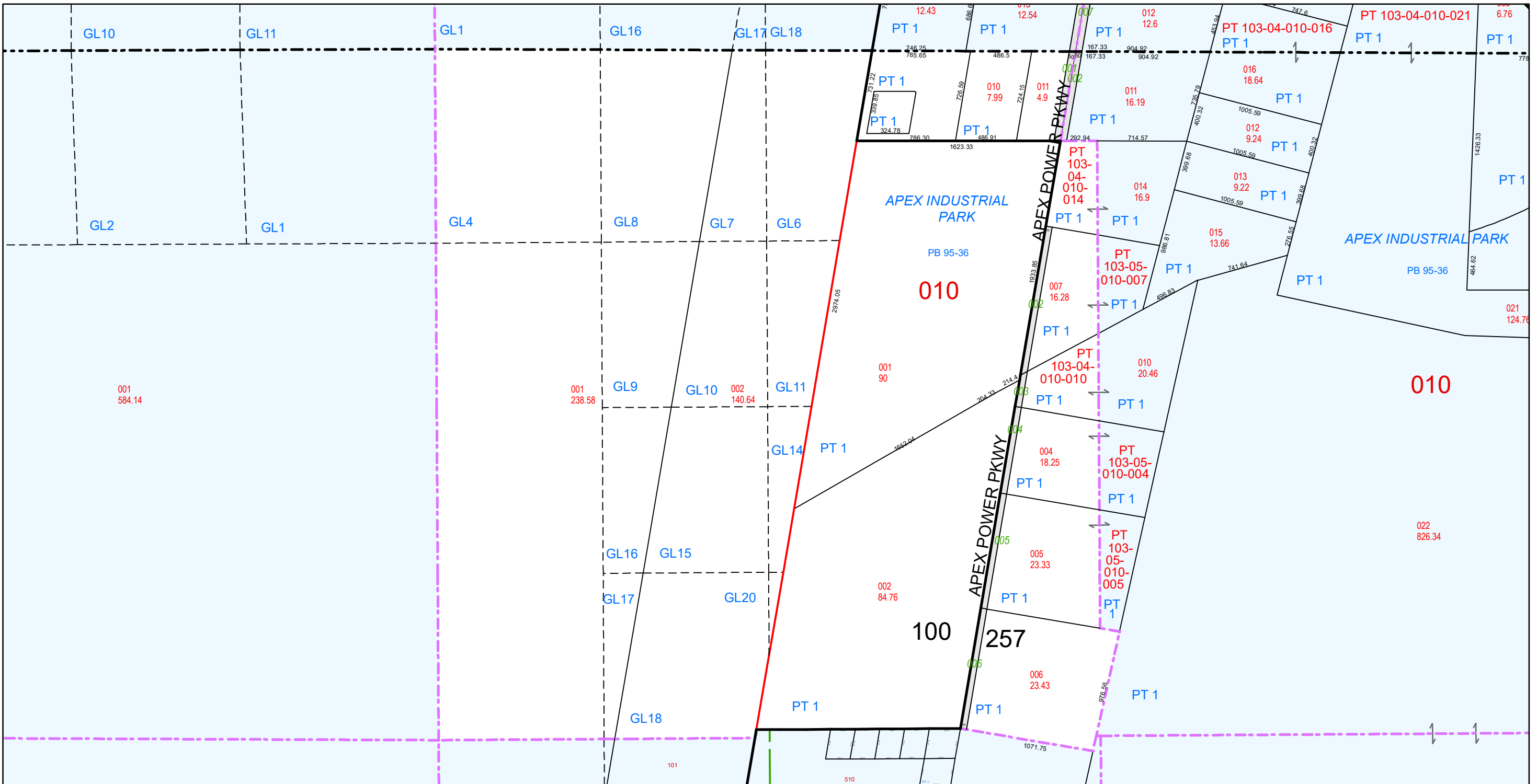
8 4 8 4
 5 1 5 1
 6 2 6 2
 7 3 7 3
 8 4 8 4
 5 1 5 1

Scale: 1" = 800' Rev: 1/7/2019

CLARK COUNTY NEVADA

MAP LEGEND

- PARCEL BOUNDARY
- SUB BOUNDARY
- PM/LD BOUNDARY
- ROAD EASEMENT
- NON-PARCEL LOT LINE
- MATCH / LEADER LINE
- HISTORIC SUB BOUNDARY
- HISTORIC PM/LD BOUNDARY
- SECTION LINE
- CONDOMINIUM UNIT
- AIR SPACE PCL
- RIGHT OF WAY PCL
- SUB-SURFACE PCL
- 001 ROAD ID NUMBER
- 001 PARCEL NUMBER
- 1.00 ACREAGE
- 202 PARCEL SUB/SEQ NUMBER
- PB 24-45 PLAT RECORDING NUMBER
- 5 BLOCK NUMBER
- 5 LOT NUMBER
- GL5 GOV. LOT NUMBER



TAX DIST 257,100