

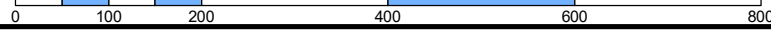
This map is for assessment use only and does NOT represent a survey.

No liability is assumed for the accuracy of the data delineated herein. Information on roads and other non-assessed parcels may be obtained from the Road Document Listing in the Assessor's Office.

This map is compiled from official records, including surveys and deeds, but only contains the information required for assessment. See the recorded documents for more detailed legal information.

NOTES

USE THIS SCALE(FEET) WHEN MAP REDUCED FROM 11X17 ORIGINAL



ASSESSOR'S PARCELS - CLARK COUNTY, NV. Briana Johnson - Assessor

- PARCEL BOUNDARY
- - - SUB BOUNDARY
- - - PM/LD BOUNDARY
- - - ROAD EASEMENT
- - - MATCH / LEADER LINE
- - - HISTORIC LOT LINE
- - - HISTORIC SUB BOUNDARY
- - - HISTORIC PM/LD BOUNDARY
- - - SECTION LINE
- CONDOMINIUM UNIT
- AIR SPACE PCL
- RIGHT OF WAY PCL
- SUB-SURFACE PCL
- 001 ROAD PARCEL NUMBER
- 001 PARCEL NUMBER
- 1.00 ACREAGE
- 202 PARCEL SUB/SEQ NUMBER
- PB 24-45 PLAT RECORDING NUMBER
- 5 BLOCK NUMBER
- 5 LOT NUMBER
- GL5 GOV. LOT NUMBER

BOOK T23S R61E

SEC. 17

MAP S 2 SW 4

191-17-4

75176	177	178
93192	191	190
03204	205	206

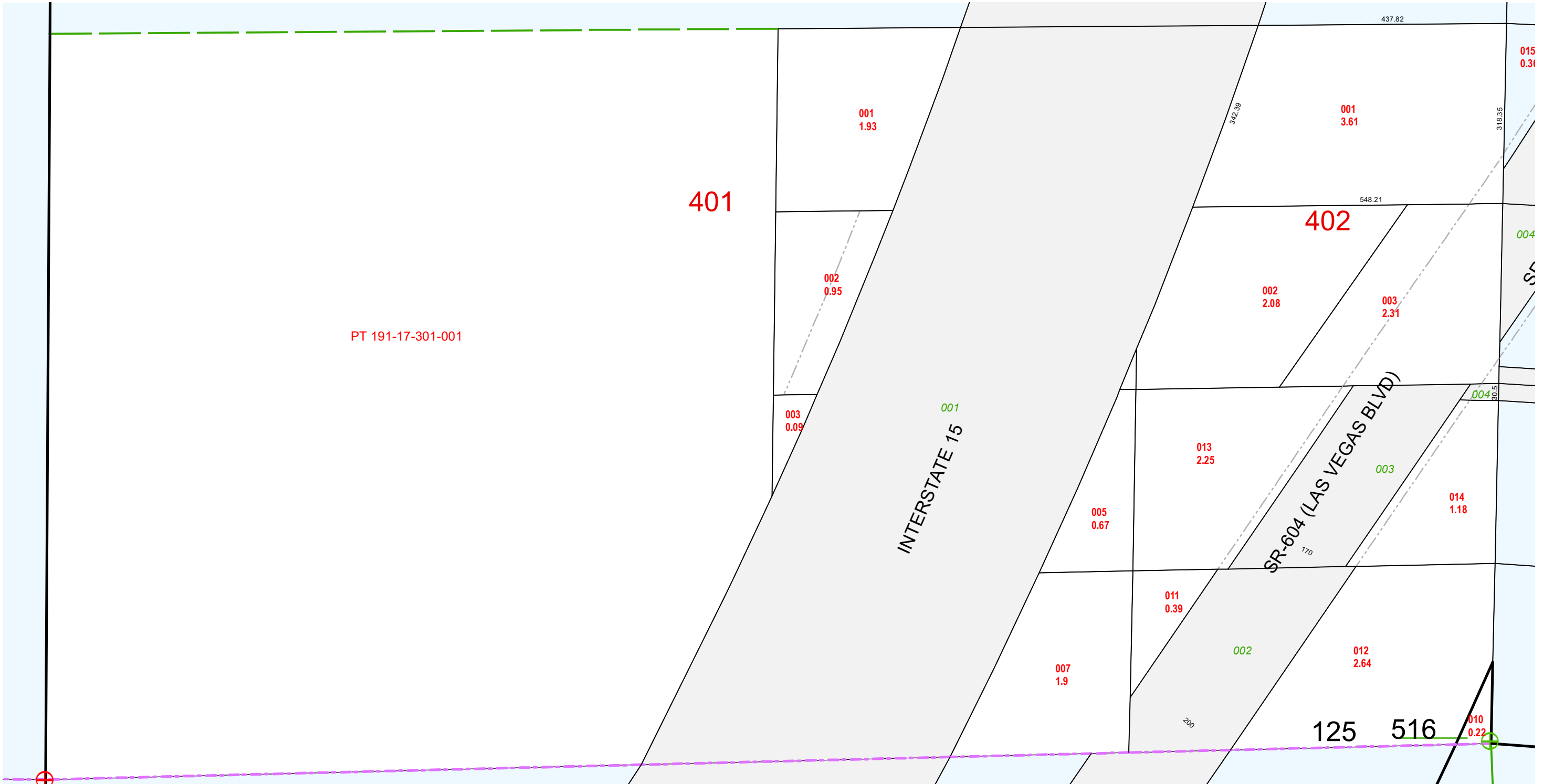
6	5	4	3	2	1
7	8	9	10	11	12
13	14	15	16	17	18
19	20	21	22	23	24
25	26	27	28	29	30
31	32	33	34	35	36

8	4	8	4
5	1	5	1
6	2	6	2
7	3	7	3
8	4	8	4
5	1	5	1



Scale: 1" = 200'

Rev: 2/8/2022



PT 191-17-301-001

401

402

INTERSTATE 15

SR-604 (LAS VEGAS BLVD)

125 516

TAX DIST 125,516