

This map is for assessment use only and does NOT represent a survey.
 No liability is assumed for the accuracy of the data delineated herein. Information on roads and other non-assessed parcels may be obtained from the Road Document Listing in the Assessor's Office.

This map is compiled from official records, including surveys and deeds, but only contains the information required for assessment. See the recorded documents for more detailed legal information.

USE THIS SCALE (FEET) WHEN MAP REDUCED FROM 11X17 ORIGINAL

ASSESSOR'S PARCELS - CLARK COUNTY, NV.
 Briana Johnson - Assessor

BOOK **T23S R61E** SEC. **10** MAP **S 2 SE 4** **191-10-8**

176 177 178
 192 191 190
 204 205 206

6	5	4	3	2	1
7	8	9	10	11	12
18	17	16	15	14	13
19	20	21	22	23	24
30	29	28	27	26	25
31	32	33	34	35	36

8 4 8 4
 5 1 5 1
 6 2 6 2
 7 3 7 3
 8 4 8 4
 5 1 5 1

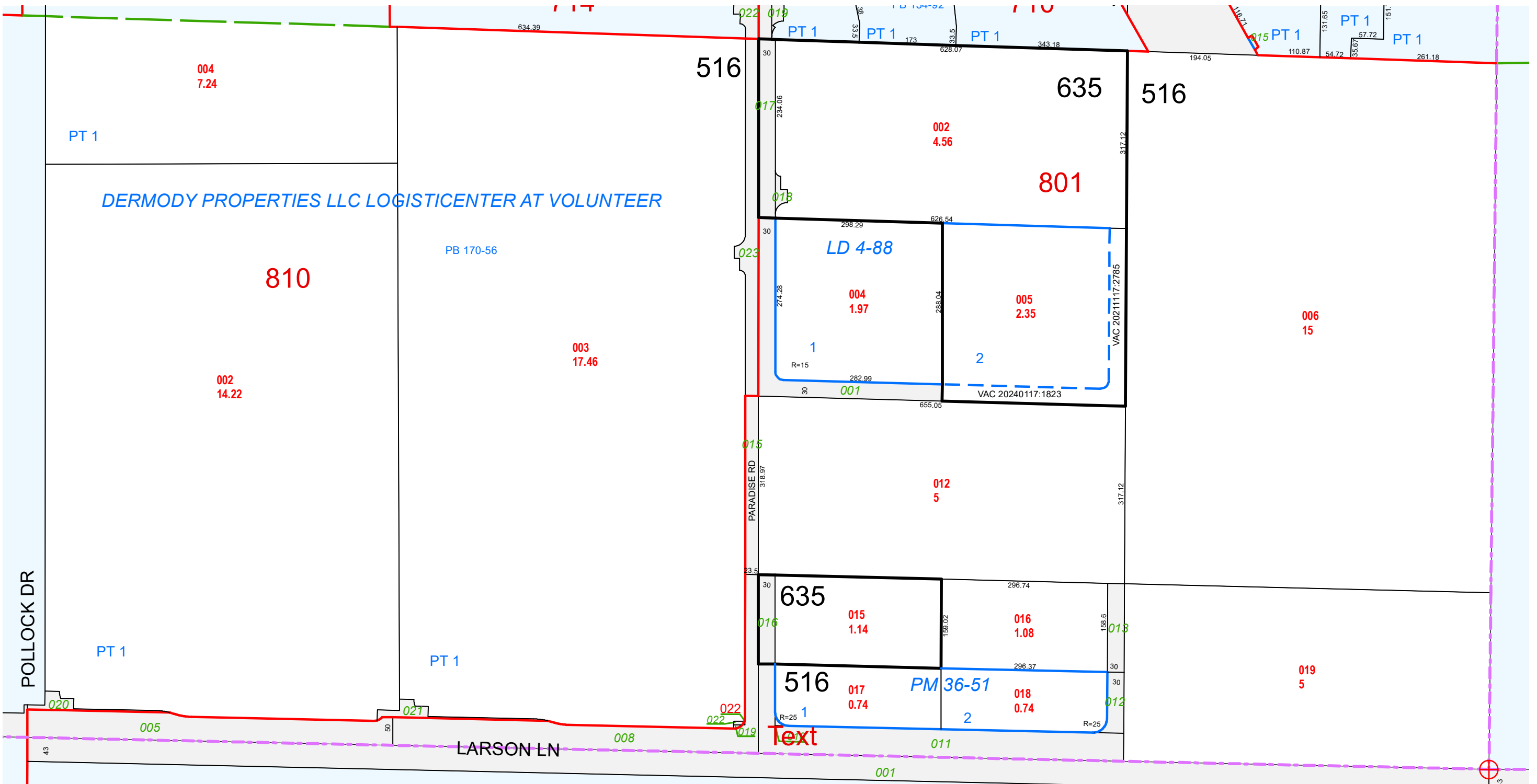
Scale: 1" = 200' Rev: 4/4/2024

PARCEL BOUNDARY
 SUB BOUNDARY
 PM/LD BOUNDARY
 ROAD EASEMENT
 MATCH / LEADER LINE
 HISTORIC LOT LINE
 HISTORIC SUB BOUNDARY
 HISTORIC PM/LD BOUNDARY
 SECTION LINE
 CONDOMINIUM UNIT
 AIR SPACE PCL
 RIGHT OF WAY PCL
 SUB-SURFACE PCL
 001 ROAD PARCEL NUMBER
 001 PARCEL NUMBER
 1.00 ACREAGE
 202 PARCEL SUB/SEQ NUMBER
 PB 24-45 PLAT RECORDING NUMBER
 5 BLOCK NUMBER
 5 LOT NUMBER
 GL5 GOV. LOT NUMBER

NOTES

MAP LEGEND

CLARK COUNTY NEVADA



TAX DIST 516,635