

This map is for assessment use only and does NOT represent a survey.
 No liability is assumed for the accuracy of the data delineated herein. Information on roads and other non-assessed parcels may be obtained from the Road Document Listing in the Assessor's Office.

This map is compiled from official records, including surveys and deeds, but only contains the information required for assessment. See the recorded documents for more detailed legal information.

USE THIS SCALE(FEET) WHEN MAP REDUCED FROM 11X17 ORIGINAL

0 100 200 400 600 800

ASSESSOR'S PARCELS - CLARK COUNTY, NV.

Briana Johnson - Assessor

BOOK T22S R63E SEC. 19 MAP N 2 NE 4 179-19-5

62 161 160 158
77 178 179 181
91 190 189 186

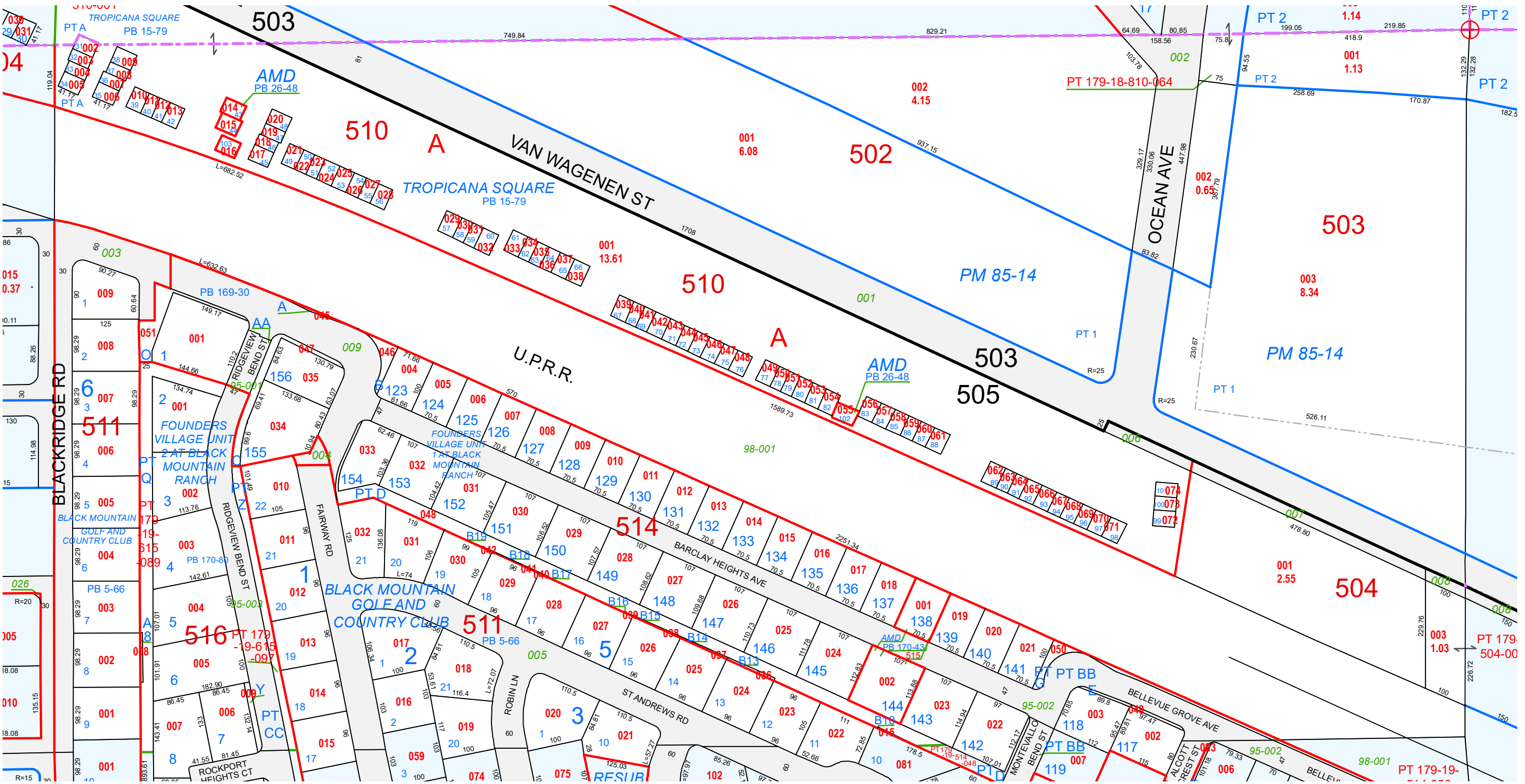
6	5	4	3	2	1
7	8	9	10	11	12
18	17	16	15	14	13
19	20	21	22	23	24
30	29	28	27	26	25
31	32	33	34	35	36

8 4 8 4
5 1 5 1
6 2 6 2
7 3 7 3
8 4 8 4
5 1 5 1

Scale: 1" = 200' Rev: 10/9/2023

MAP LEGEND

- PARCEL BOUNDARY
- SUB BOUNDARY
- PM/LD BOUNDARY
- ROAD EASEMENT
- MATCH / LEADER LINE
- HISTORIC LOT LINE
- HISTORIC SUB BOUNDARY
- HISTORIC PM/LD BOUNDARY
- SECTION LINE
- CONDOMINIUM UNIT
- AIR SPACE PCL
- RIGHT OF WAY PCL
- SUB-SURFACE PCL
- ROAD PARCEL NUMBER
- PARCEL NUMBER
- 1.00 ACREAGE
- PARCEL SUB/SEQ NUMBER
- PB 24-45 PLAT RECORDING NUMBER
- BLOCK NUMBER
- LOT NUMBER
- GL5 GOV. LOT NUMBER



TAX DIST 503,505