

This map is for assessment use only and does NOT represent a survey.
 No liability is assumed for the accuracy of the data delineated herein.
 Information on roads and other non-assessed parcels may be obtained from the Road Document Listing in the Assessor's Office.

This map is compiled from official records, including surveys and deeds, but only contains the information required for assessment. See the recorded documents for more detailed legal information.

USE THIS SCALE (FEET) WHEN MAP REDUCED FROM 11X17 ORIGINAL

ASSESSOR'S PARCELS - CLARK COUNTY, NV.
 Briana Johnson - Assessor


BOOK **T22S R63E** SEC. **7** MAP **N 2 SW 4**

6	5	4	3	2	1
7	8	9	10	11	12
18	17	16	15	14	13
19	20	21	22	23	24
30	29	28	27	26	25
31	32	33	34	35	36

8	4	8	4
5	1	5	1
6	2	6	2
7	3	7	3
8	4	8	4
5	1	5	1

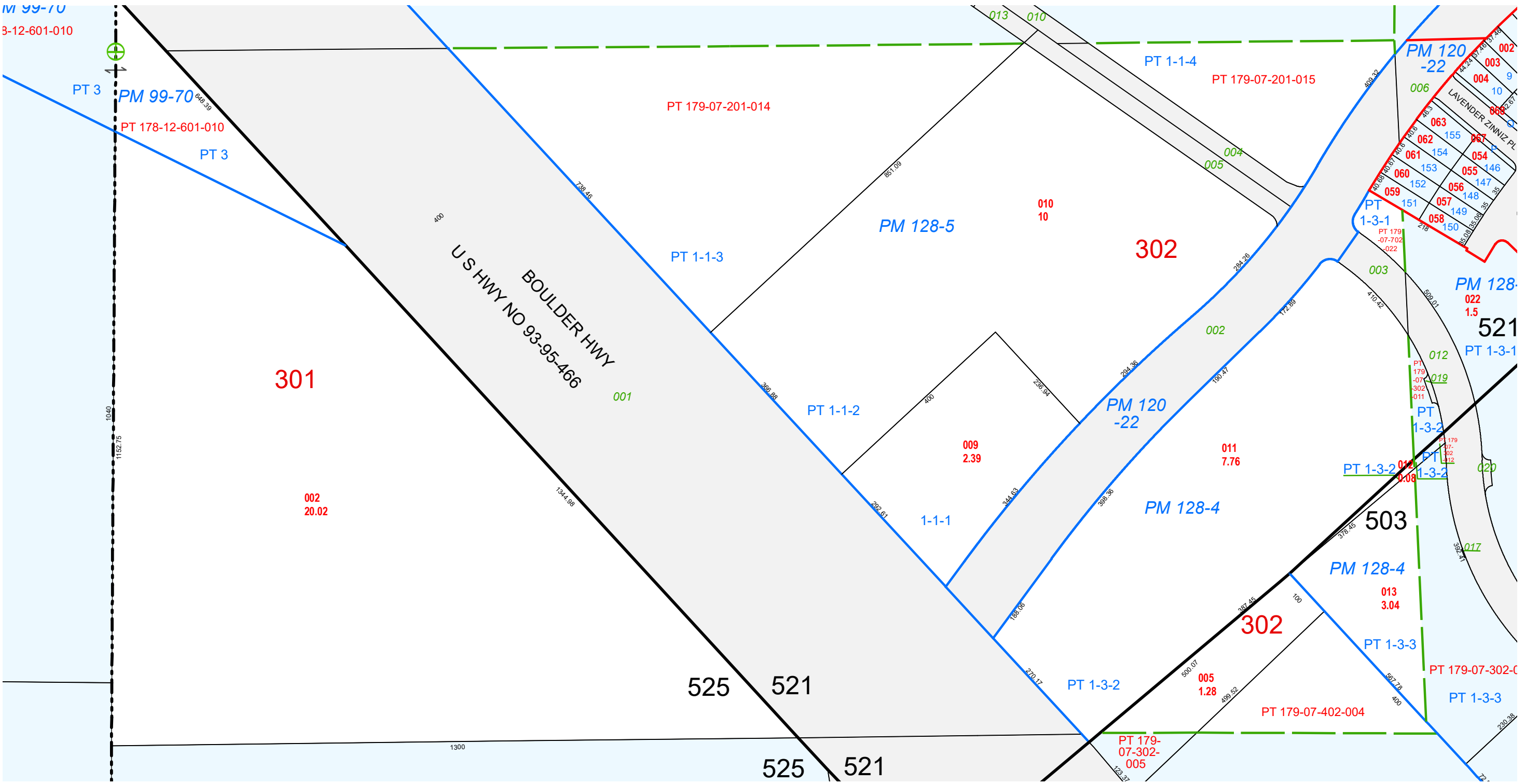
Scale: 1" = 200' Rev: 4/23/2024

179-07-3



--- PARCEL BOUNDARY
 --- SUB BOUNDARY
 --- PM/LD BOUNDARY
 --- ROAD EASEMENT
 --- MATCH / LEADER LINE
 --- HISTORIC LOT LINE
 --- HISTORIC SUB BOUNDARY
 --- HISTORIC PM/LD BOUNDARY
 --- SECTION LINE
 □ CONDOMINIUM UNIT
 □ AIR SPACE PCL
 □ RIGHT OF WAY PCL
 □ SUB-SURFACE PCL

001 ROAD PARCEL NUMBER
 001 PARCEL NUMBER
 1.00 ACREAGE
 202 PARCEL SUB/SEQ NUMBER
 PB 24-45 PLAT RECORDING NUMBER
 5 BLOCK NUMBER
 5 LOT NUMBER
 GL5 GOV. LOT NUMBER



TAX DIST 503,525,521