

This map is for assessment use only and does NOT represent a survey.

No liability is assumed for the accuracy of the data delineated herein. Information on roads and other non-assessed parcels may be obtained from the Road Document Listing in the Assessor's Office.

This map is compiled from official records, including surveys and deeds, but only contains the information required for assessment. See the recorded documents for more detailed legal information.

USE THIS SCALE (FEET) WHEN MAP REDUCED FROM 11X17 ORIGINAL



ASSESSOR'S PARCELS - CLARK COUNTY, NV.

Briana Johnson - Assessor

- | | | | | | |
|---|-------------------------|---|------------------|----------|-----------------------|
| — | PARCEL BOUNDARY | □ | CONDOMINIUM UNIT | 001 | ROAD PARCEL NUMBER |
| — | SUB BOUNDARY | □ | AIR SPACE PCL | 001 | PARCEL NUMBER |
| — | PM/LD BOUNDARY | □ | RIGHT OF WAY PCL | 1.00 | ACREAGE |
| — | ROAD EASEMENT | □ | SUB-SURFACE PCL | 202 | PARCEL SUB/SEQ NUMBER |
| — | MATCH / LEADER LINE | | | PB 24-45 | PLAT RECORDING NUMBER |
| — | HISTORIC LOT LINE | | | 5 | BLOCK NUMBER |
| — | HISTORIC SUB BOUNDARY | | | 5 | LOT NUMBER |
| — | HISTORIC PM/LD BOUNDARY | | | GL5 | GOV. LOT NUMBER |
| — | SECTION LINE | | | | |

BOOK T21S R60E

SEC. 35

MAP S 2 SW 4

163-35-4

137	138	139
164	163	162
175	176	177
193	192	191

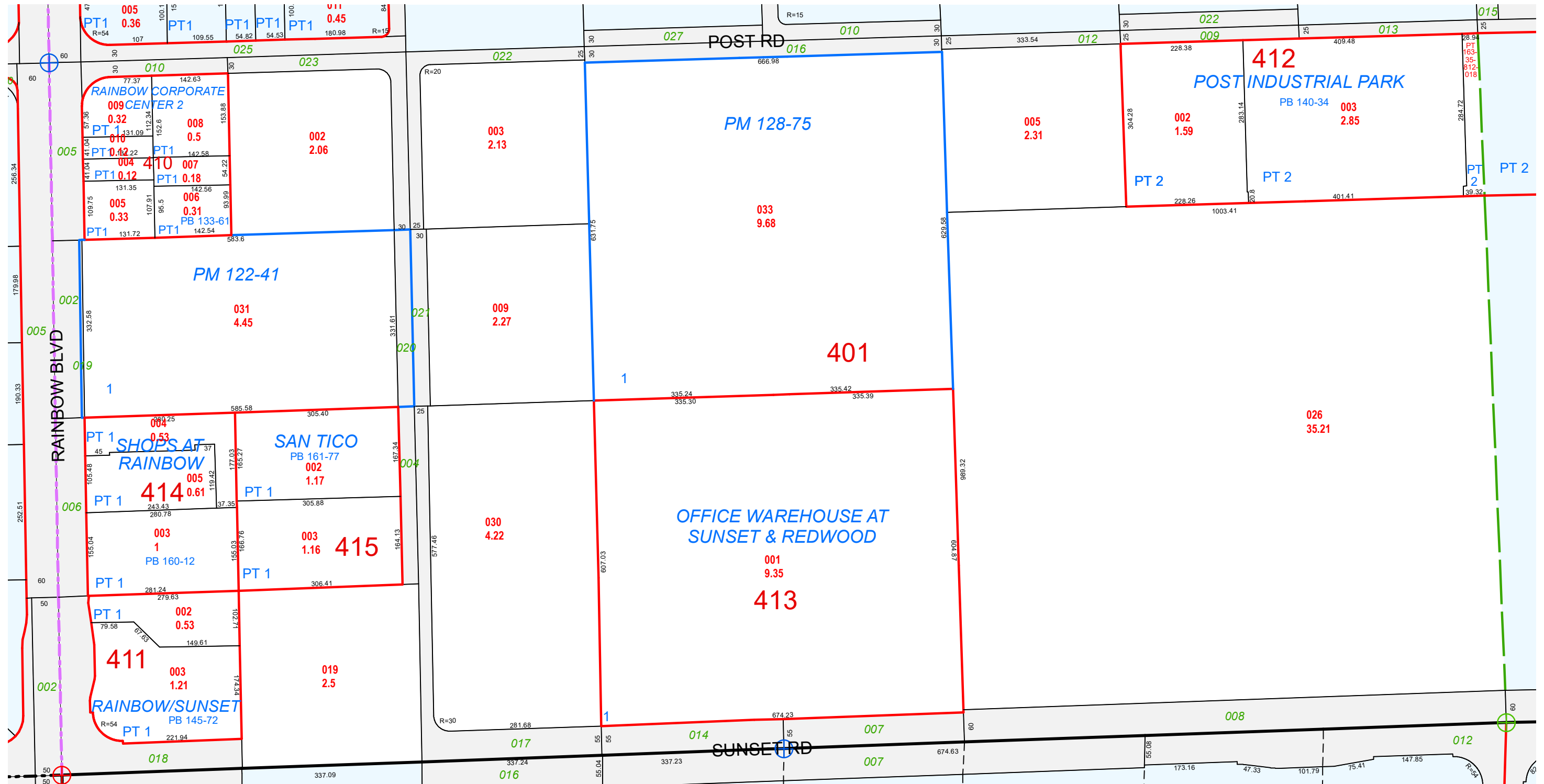
6	5	4	3	2	1
7	8	9	10	11	12
13	14	15	16	17	18
19	20	21	22	23	24
25	26	27	28	29	30
31	32	33	34	35	36

8	4	8	4
5	1	5	1
6	2	6	2
7	3	7	3
8	4	8	4
5	1	5	1



Scale: 1" = 200'

Rev: 9/13/2022



TAX DIST 417