

This map is for assessment use only and does NOT represent a survey.
 No liability is assumed for the accuracy of the data delineated herein. Information on roads and other non-assessed parcels may be obtained from the Road Document Listing in the Assessor's Office.

This map is compiled from official records, including surveys and deeds, but only contains the information required for assessment. See the recorded documents for more detailed legal information.

USE THIS SCALE (FEET) WHEN MAP REDUCED FROM 11X17 ORIGINAL

ASSESSOR'S PARCELS - CLARK COUNTY, NV.
 Briana Johnson - Assessor

BOOK **T21S R61E** SEC. **17** MAP **N 2 SW 4** **162-17-3**

37138 139 140
 64163 162 161
 75176 177 178

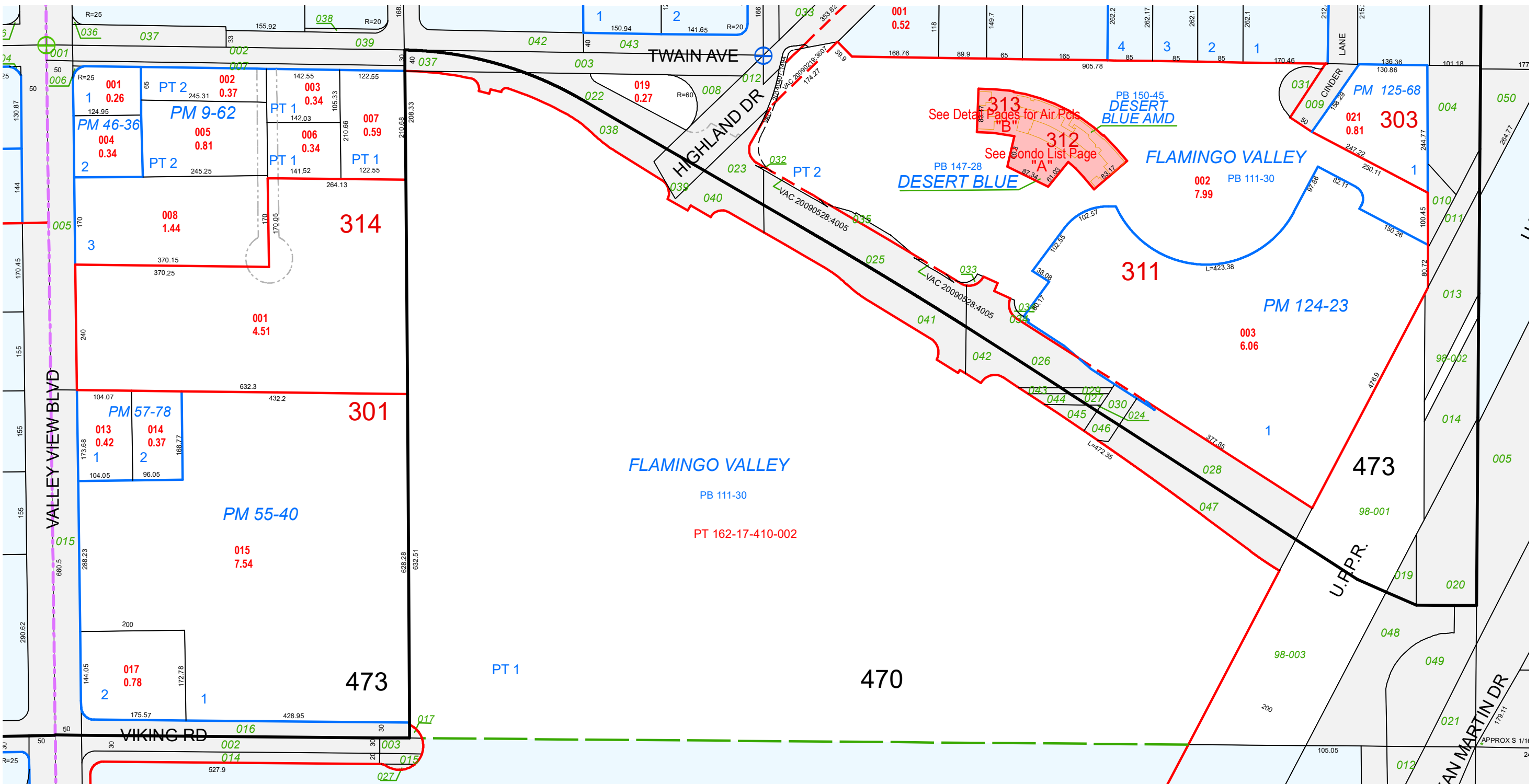
| | | | | | |
|----|----|----|----|----|----|
| 6 | 5 | 4 | 3 | 2 | 1 |
| 7 | 8 | 9 | 10 | 11 | 12 |
| 18 | 17 | 16 | 15 | 14 | 13 |
| 19 | 20 | 21 | 22 | 23 | 24 |
| 30 | 29 | 28 | 27 | 26 | 25 |
| 31 | 32 | 33 | 34 | 35 | 36 |

8 4 8 4
 5 1 5 1
 6 2 6 2
 7 3 7 3
 8 4 8 4
 5 1 5 1

Scale: 1" = 200' Rev: 4/29/2025

MAP LEGEND

- PARCEL BOUNDARY
- SUB BOUNDARY
- PM/LD BOUNDARY
- ROAD EASEMENT
- MATCH / LEADER LINE
- HISTORIC LOT LINE
- HISTORIC SUB BOUNDARY
- HISTORIC PM/LD BOUNDARY
- SECTION LINE
- CONDOMINIUM UNIT
- AIR SPACE PCL
- RIGHT OF WAY PCL
- SUB-SURFACE PCL
- ROAD PARCEL NUMBER
- PARCEL NUMBER
- 1.00 ACREAGE
- PARCEL SUB/SEQ NUMBER
- PB 24-45 PLAT RECORDING NUMBER
- BLOCK NUMBER
- LOT NUMBER
- GL5 GOV. LOT NUMBER



TAX DIST 470, 473