

This map is for assessment use only and does NOT represent a survey.
 No liability is assumed for the accuracy of the data delineated herein.
 Information on roads and other non-assessed parcels may be obtained from the Road Document Listing in the Assessor's Office.

This map is compiled from official records, including surveys and deeds, but only contains the information required for assessment. See the recorded documents for more detailed legal information.

USE THIS SCALE (FEET) WHEN MAP REDUCED FROM 11X17 ORIGINAL

ASSESSOR'S PARCELS - CLARK COUNTY, NV.
 Briana Johnson - Assessor

BOOK **T19S R60E** SEC. **28** MAP **N 2 NE 4** **125-28-5**

MAP LEGEND:
 - PARCEL BOUNDARY (solid black line)
 - SUB BOUNDARY (dashed black line)
 - PM/LD BOUNDARY (solid blue line)
 - ROAD EASEMENT (dashed blue line)
 - MATCH / LEADER LINE (dotted black line)
 - HISTORIC LOT LINE (dashed red line)
 - HISTORIC SUB BOUNDARY (dashed red line)
 - HISTORIC PM/LD BOUNDARY (dashed blue line)
 - SECTION LINE (dashed purple line)

CONDOMINIUM UNIT (green outline)
 AIR SPACE PCL (orange fill)
 RIGHT OF WAY PCL (grey fill)
 SUB-SURFACE PCL (brown fill)


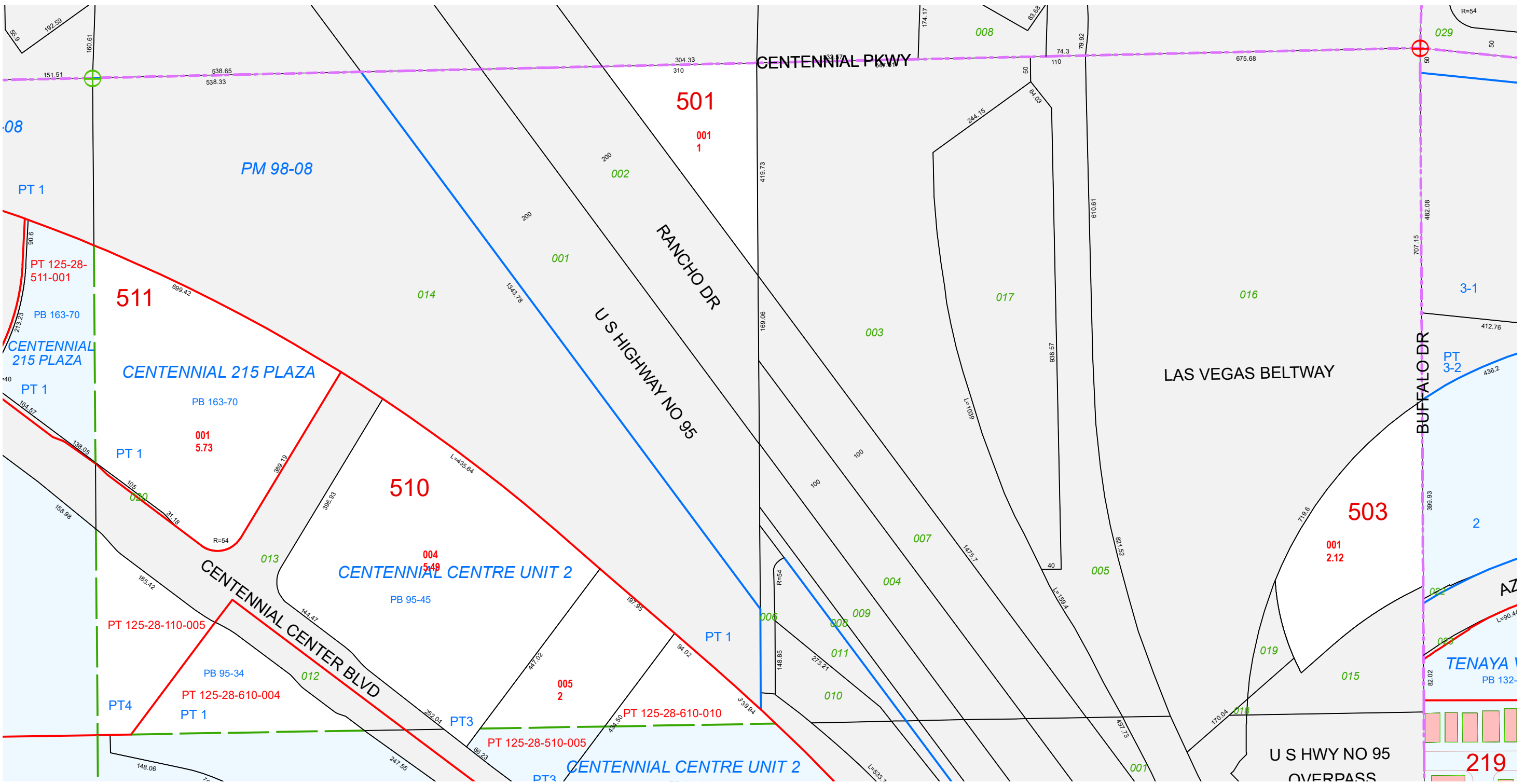
001 ROAD PARCEL NUMBER
 001 PARCEL NUMBER
 1.00 ACREAGE
 202 PARCEL SUB/SEQ NUMBER
 PB 24-45 PLAT RECORDING NUMBER
 5 BLOCK NUMBER
 5 LOT NUMBER
 GL5 GOV. LOT NUMBER

099	100	101
126	125	124
137	138	139

6	5	4	3	2	1
7	8	9	10	11	12
18	17	16	15	14	13
19	20	21	22	23	24
30	29	28	27	26	25
31	32	33	34	35	36

8	4	8	4
5	1	5	1
6	2	6	2
7	3	7	3
8	4	8	4
5	1	5	1

Scale: 1" = 200' Rev: 2/3/2021

U S HWY NO 95 OVERPASS
 TAX DIST 200
 219