

**ASSESSOR'S PARCELS - CLARK COUNTY, NV.**  
**Briana Johnson - Assessor**

**BOOK** T14S R66E    **SEC.** 35    **MAP** N 2 NE 4    **031-35-5**


**007006**    **00500**  
**030**    **031**    **03203**  
**043**    **042**    **04104**  
**068**    **069**    **07007**

Scale: 1" = 200'    Rev: 9/25/2019

6	5	4	3	2	1
7	8	9	10	11	12
18	17	16	15	14	13
19	20	21	22	23	24
30	29	28	27	26	25
31	32	33	34	35	36

8	4	8	4
5	1	5	1
6	2	6	2
7	3	7	3
8	4	8	4
5	1	5	1

**031-35-5**

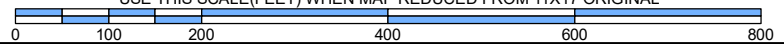
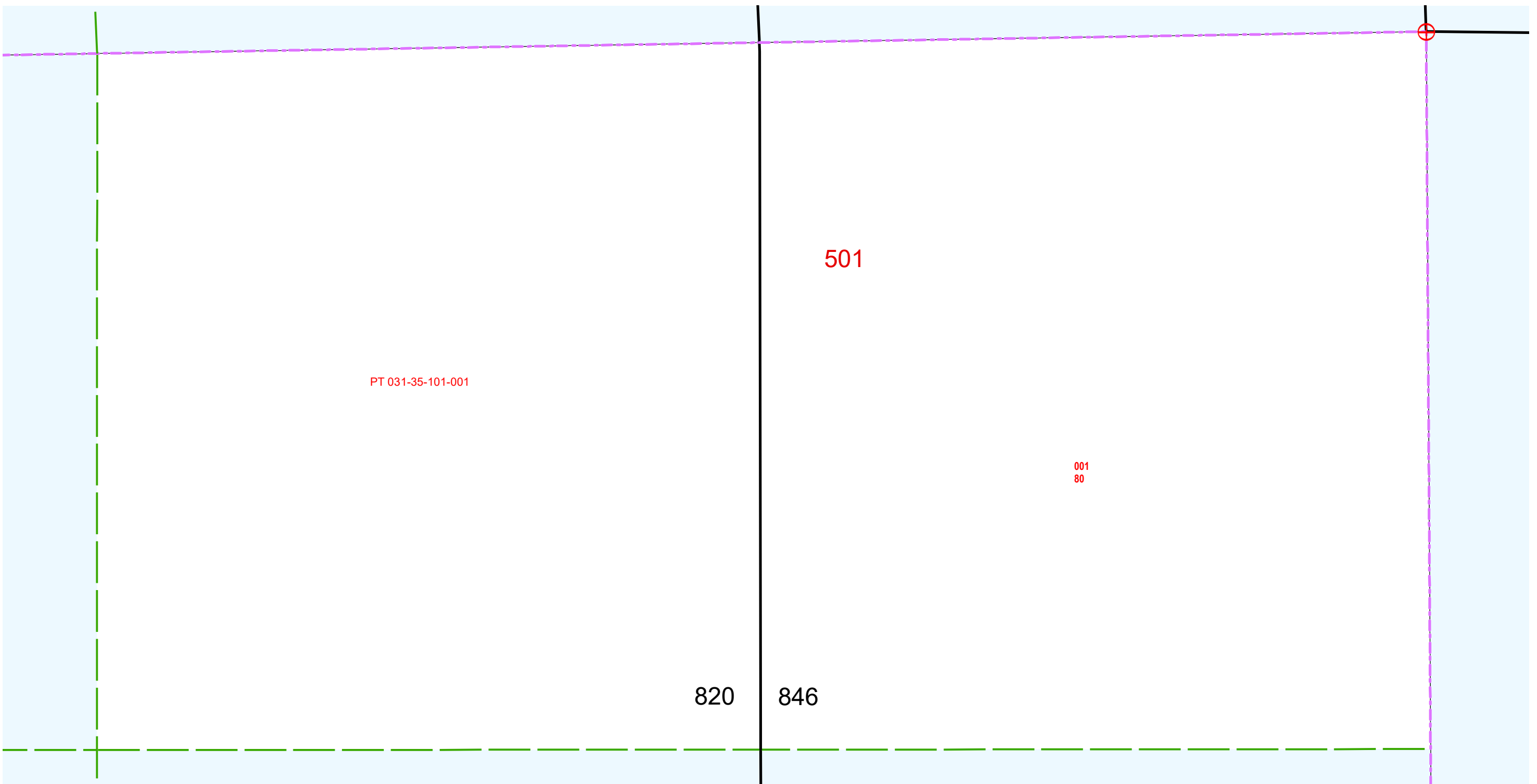


**NOTES**  
 This map is for assessment use only and does NOT represent a survey.  
 No liability is assumed for the accuracy of the data delineated herein.  
 Information on roads and other non-assessed parcels may be obtained from the Road Document Listing in the Assessor's Office.  
 This map is compiled from official records, including surveys and deeds, but only contains the information required for assessment. See the recorded documents for more detailed legal information.

**MAP LEGEND**

- PARCEL BOUNDARY
- SUB BOUNDARY
- PM/LD BOUNDARY
- ROAD EASEMENT
- MATCH / LEADER LINE
- HISTORIC LOT LINE
- HISTORIC SUB BOUNDARY
- HISTORIC PM/LD BOUNDARY
- SECTION LINE
- CONDOMINIUM UNIT
- AIR SPACE PCL
- RIGHT OF WAY PCL
- SUB-SURFACE PCL
- 001 ROAD PARCEL NUMBER
- 001 PARCEL NUMBER
- 1.00 ACREAGE
- 202 PARCEL SUB/SEQ NUMBER
- PB 24-45 PLAT RECORDING NUMBER
- 5 BLOCK NUMBER
- 5 LOT NUMBER
- GL5 GOV. LOT NUMBER

USE THIS SCALE(FEET) WHEN MAP REDUCED FROM 11X17 ORIGINAL

TAX DIST 815,820