

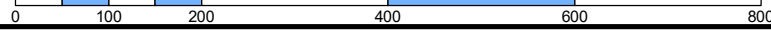
This map is for assessment use only and does NOT represent a survey.

No liability is assumed for the accuracy of the data delineated herein. Information on roads and other non-assessed parcels may be obtained from the Road Document Listing in the Assessor's Office.

This map is compiled from official records, including surveys and deeds, but only contains the information required for assessment. See the recorded documents for more detailed legal information.

NOTES

USE THIS SCALE(FEET) WHEN MAP REDUCED FROM 11X17 ORIGINAL



ASSESSOR'S PARCELS - CLARK COUNTY, NV. Briana Johnson - Assessor

- | | | | | | |
|--|-------------------------|--|------------------|----------|-----------------------|
| | PARCEL BOUNDARY | | CONDOMINIUM UNIT | 001 | ROAD PARCEL NUMBER |
| | SUB BOUNDARY | | AIR SPACE PCL | 001 | PARCEL NUMBER |
| | PM/LD BOUNDARY | | RIGHT OF WAY PCL | 1.00 | ACREAGE |
| | ROAD EASEMENT | | SUB-SURFACE PCL | 202 | PARCEL SUB/SEQ NUMBER |
| | MATCH / LEADER LINE | | | PB 24-45 | PLAT RECORDING NUMBER |
| | HISTORIC LOT LINE | | | 5 | BLOCK NUMBER |
| | HISTORIC SUB BOUNDARY | | | 5 | LOT NUMBER |
| | HISTORIC PM/LD BOUNDARY | | | GL5 | GOV. LOT NUMBER |
| | SECTION LINE | | | | |

BOOK T14S R66E

SEC. 22

MAP S 2 SW 4

031-22-4

007	006	005
030	031	032
043	042	041

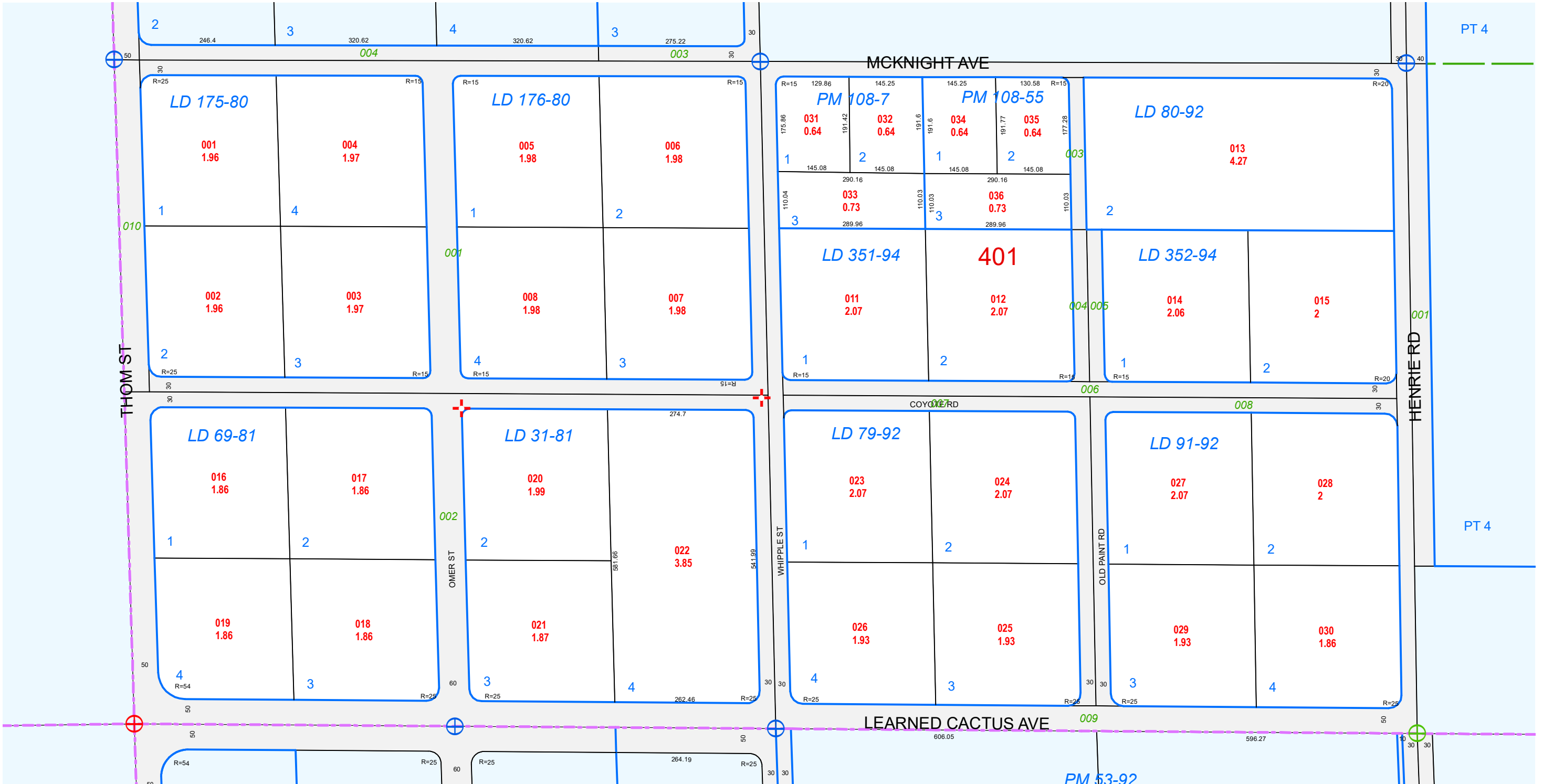
6	5	4	3	2	1
7	8	9	10	11	12
13	14	15	16	17	18
19	20	21	22	23	24
25	26	27	28	29	30
31	32	33	34	35	36

8	4	8	4
5	1	5	1
6	2	6	2
7	3	7	3
8	4	8	4
5	1	5	1



Scale: 1" = 200'

Rev: 1/8/2019



TAX DIST 820