

**ASSESSOR'S PARCELS - CLARK COUNTY, NV.**  
**Briana Johnson - Assessor**

**BOOK T13S R71E**    **SEC. 6**    **MAP N 2 NE 4**    **001-06-5**

**03 002 001**  
**34 035 036**

**Scale: 1" = 200'**    **Rev: 7/15/2024**

**001 ROAD PARCEL NUMBER**  
**001 PARCEL NUMBER**  
**1.00 ACREAGE**  
**202 PARCEL SUB/SEQ NUMBER**  
**PB 24-45 PLAT RECORDING NUMBER**  
**5 BLOCK NUMBER**  
**5 LOT NUMBER**  
**GL5 GOV. LOT NUMBER**

**PARCEL BOUNDARY** (solid red line)  
**SUB BOUNDARY** (dashed red line)  
**PM/LD BOUNDARY** (dashed blue line)  
**ROAD EASEMENT** (dashed green line)  
**MATCH / LEADER LINE** (dashed purple line)  
**HISTORIC LOT LINE** (dotted black line)  
**HISTORIC SUB BOUNDARY** (dashed red line)  
**HISTORIC PM/LD BOUNDARY** (dashed blue line)  
**SECTION LINE** (dashed purple line)

**CONDOMINIUM UNIT** (green outline)  
**AIR SPACE PCL** (orange fill)  
**RIGHT OF WAY PCL** (grey fill)  
**SUB-SURFACE PCL** (brown fill)

**001 ROAD PARCEL NUMBER**  
**001 PARCEL NUMBER**  
**1.00 ACREAGE**  
**202 PARCEL SUB/SEQ NUMBER**  
**PB 24-45 PLAT RECORDING NUMBER**  
**5 BLOCK NUMBER**  
**5 LOT NUMBER**  
**GL5 GOV. LOT NUMBER**

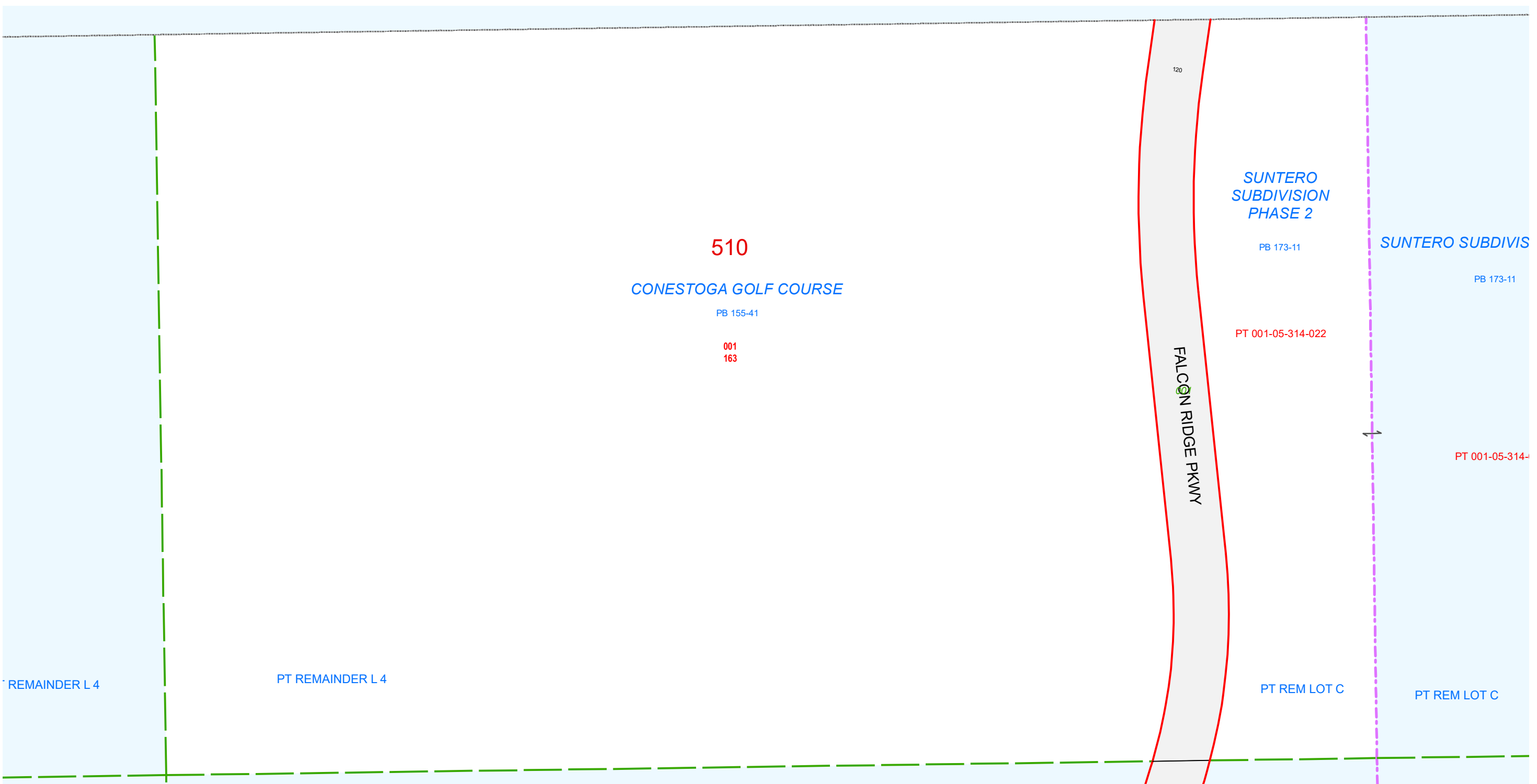
**NOTES**  
 This map is for assessment use only and does NOT represent a survey.  
 No liability is assumed for the accuracy of the data delineated herein.  
 Information on roads and other non-assessed parcels may be obtained from the Road Document Listing in the Assessor's Office.  
 This map is compiled from official records, including surveys and deeds, but only contains the information required for assessment. See the recorded documents for more detailed legal information.

**MAP LEGEND**

USE THIS SCALE (FEET) WHEN MAP REDUCED FROM 11X17 ORIGINAL

0 100 200 400 600 800

**CLARK COUNTY NEVADA**



TAX DIST 901